

**Anti-ZNF307 Antibody**  
**Rabbit polyclonal antibody to ZNF307**  
**Catalog # AP60862****Specification**

---

**Anti-ZNF307 Antibody - Product Information**

Application	WB, IHC
Primary Accession	<a href="#">O969J2</a>
Reactivity	Human, Mouse, Rat
Host	Rabbit
Clonality	Polyclonal
Calculated MW	61579

**Anti-ZNF307 Antibody - Additional Information****Gene ID** 387032**Other Names**

ZNF307; ZNF427; Zinc finger protein with KRAB and SCAN domains 4; P373c6.1; Zinc finger protein 307; Zinc finger protein 427

**Target/Specificity**

KLH-conjugated synthetic peptide encompassing a sequence within the center region of human ZNF307. The exact sequence is proprietary.

**Dilution**WB~~WB (1/500 - 1/2000), IH (1/50 - 1/200)  
IHC~~1:100~500**Format**

Liquid in 0.42% Potassium phosphate, 0.87% Sodium chloride, pH 7.3, 30% glycerol, and 0.09% (W/V) sodium azide.

**Storage**

Store at -20 °C.Stable for 12 months from date of receipt

**Anti-ZNF307 Antibody - Protein Information****Name** ZKSCAN4**Synonyms** ZNF307, ZNF427**Function**

May be involved in the transcriptional activation of MDM2 and EP300 genes.

**Cellular Location**

Nucleus {ECO:0000255|PROSITE-ProRule:PRU00187, ECO:0000269|PubMed:17910948}

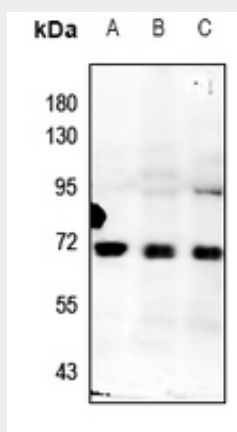
**Tissue Location**

Expressed in adult heart, brain, placenta, lung and kidney, but not in adult liver and skeletal muscle. In 17-day old embryo, detected in liver, skeletal muscle, brain, heart and small intestine.

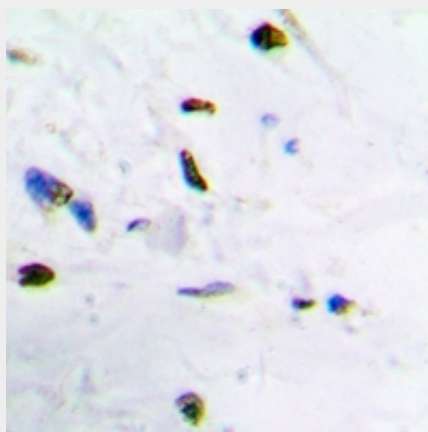
**Anti-ZNF307 Antibody - Protocols**

Provided below are standard protocols that you may find useful for product applications.

- [Western Blot](#)
- [Blocking Peptides](#)
- [Dot Blot](#)
- [Immunohistochemistry](#)
- [Immunofluorescence](#)
- [Immunoprecipitation](#)
- [Flow Cytometry](#)
- [Cell Culture](#)

**Anti-ZNF307 Antibody - Images**

Western blot analysis of ZNF307 expression in MEF (A), PC12 (B), A549 (C) whole cell lysates.



Immunohistochemical analysis of ZNF307 staining in human brain formalin fixed paraffin embedded tissue section. The section was pre-treated using heat mediated antigen retrieval with sodium citrate buffer (pH 6.0). The section was then incubated with the antibody at room temperature and detected using an HRP conjugated compact polymer system. DAB was used as the chromogen. The section was then counterstained with haematoxylin and mounted with DPX.

**Anti-ZNF307 Antibody - Background**

KLH-conjugated synthetic peptide encompassing a sequence within the center region of human ZNF307. The exact sequence is proprietary.